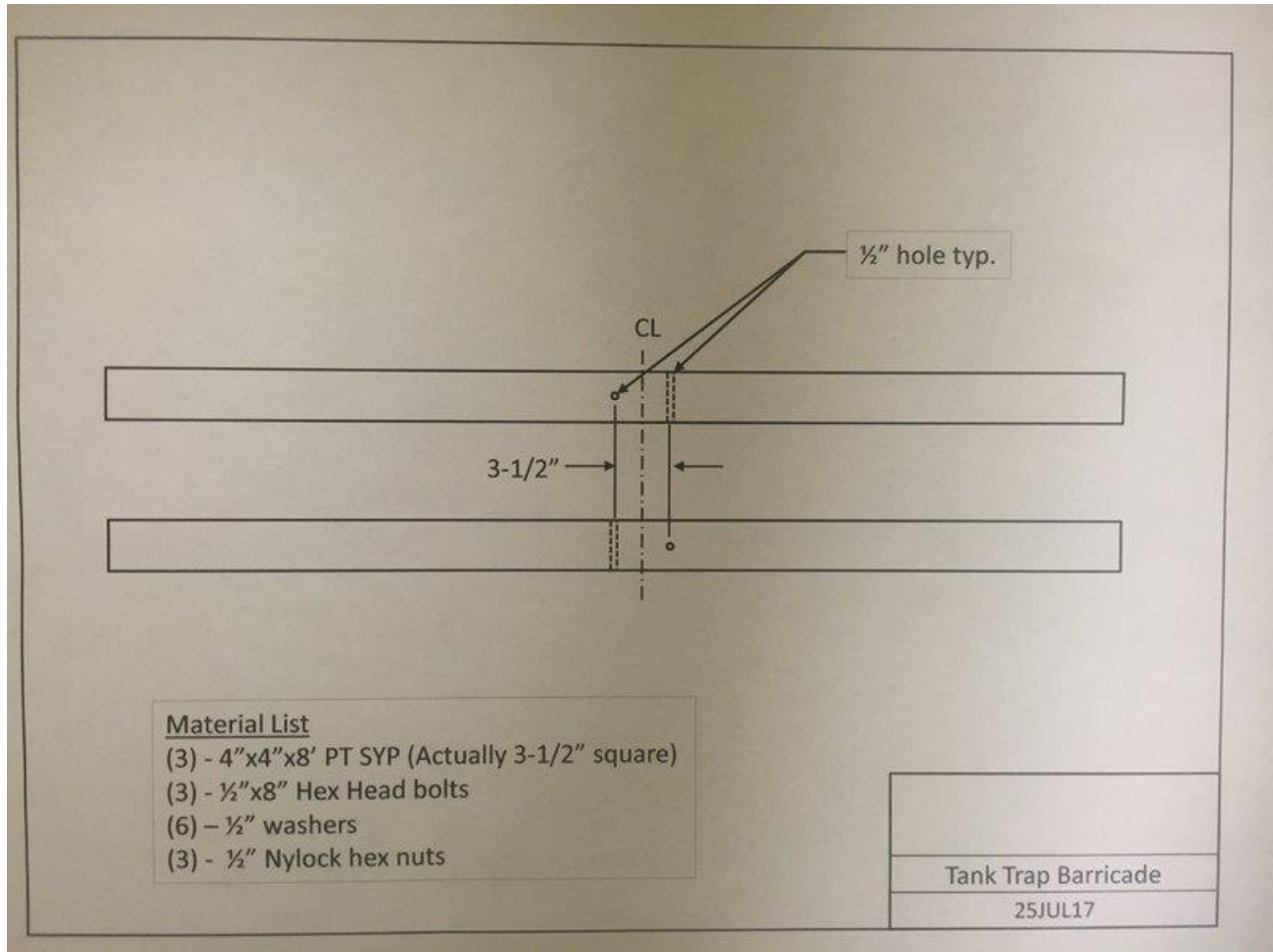


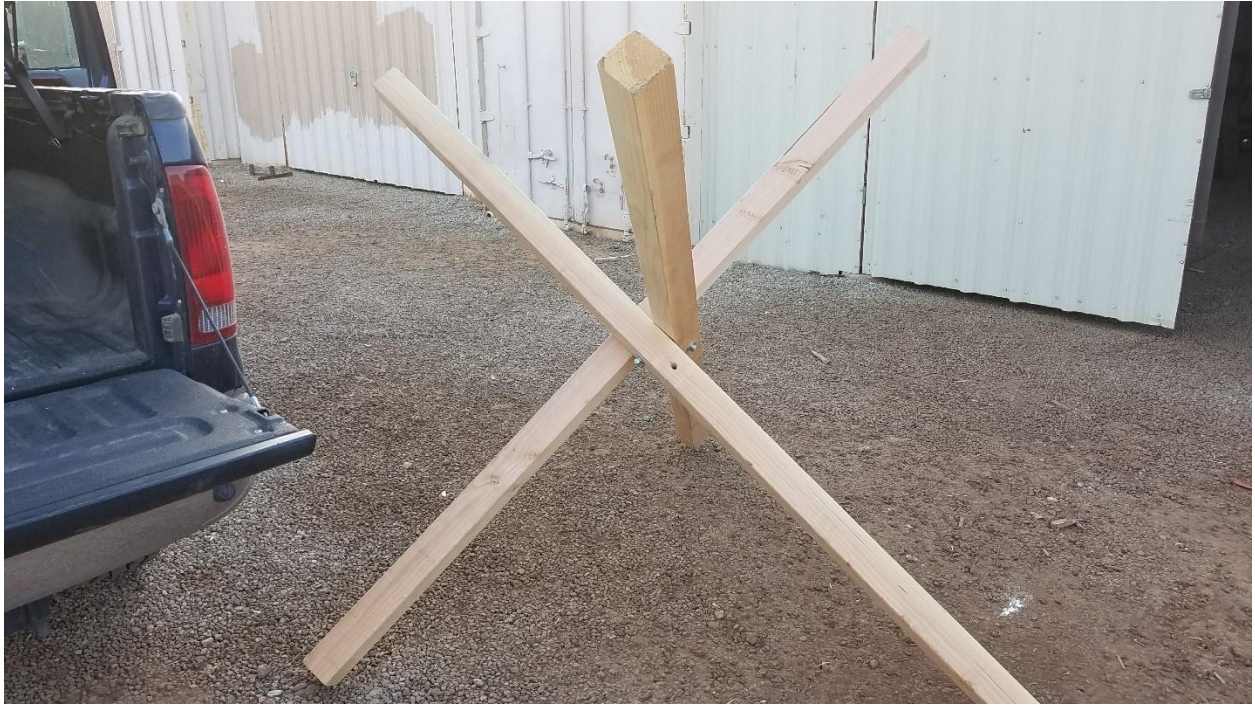
Tank Trap Plans

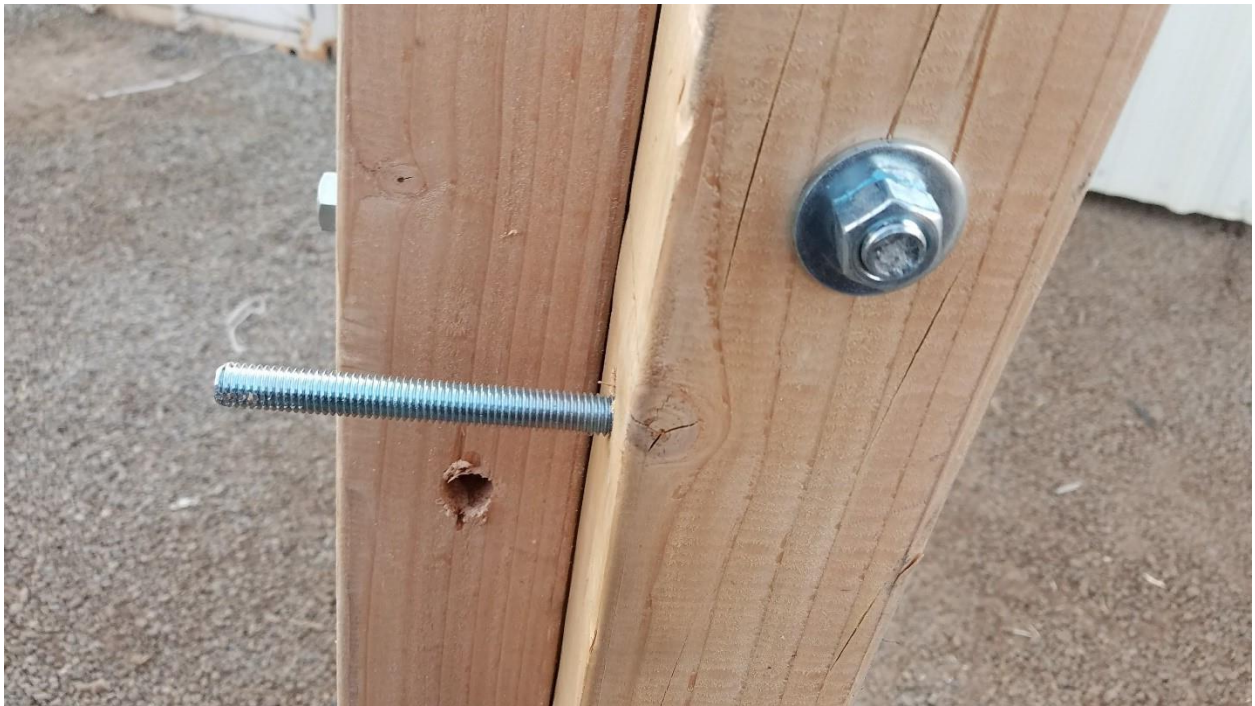
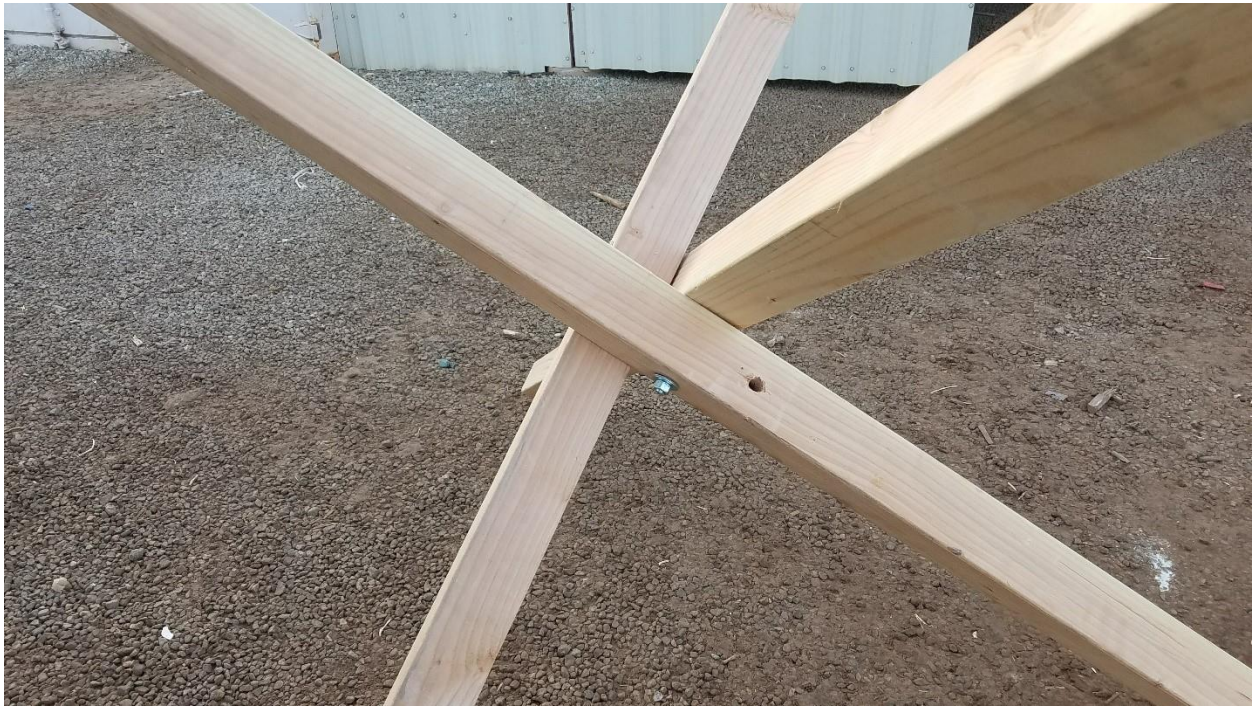


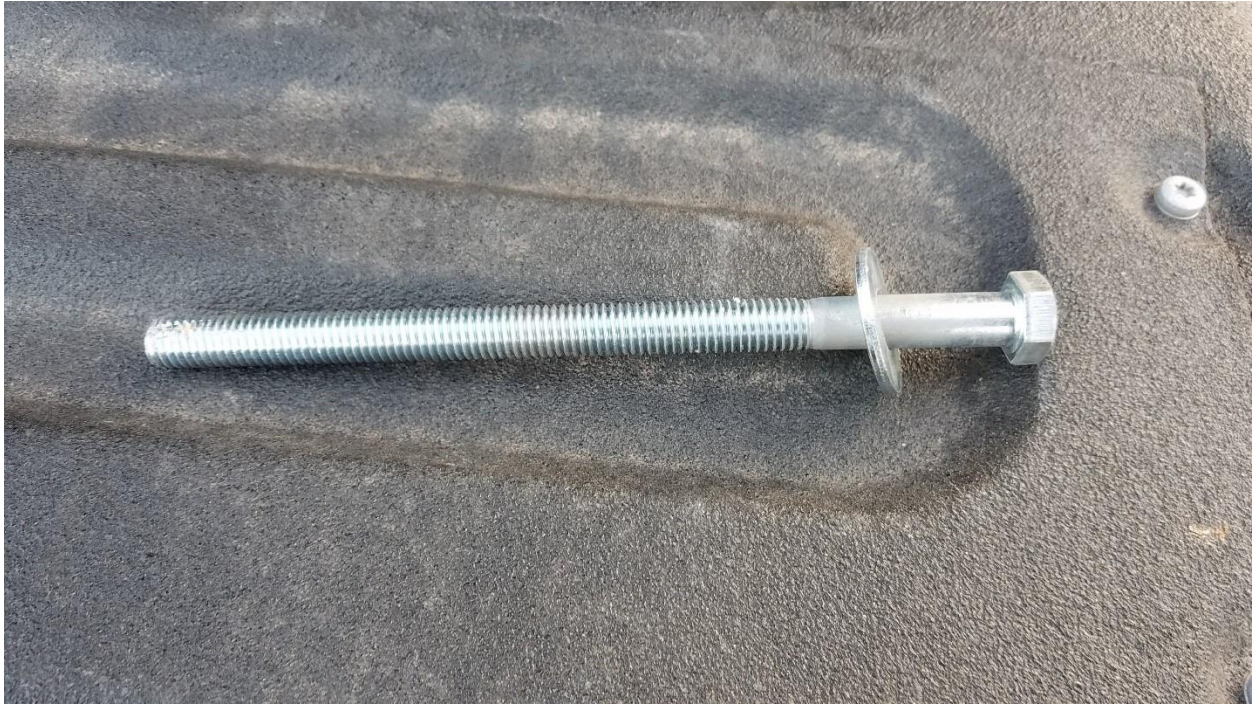
Note: We used eight-foot-long 4X4's for our trap. It is quite tall, but a 5'6" lady can shoot from the tips.

1. Five-foot-long 4X4's would probably be better suited. Make your choice based on who shoots from yours.
2. Measure to the center of the 4x4 lengthwise and draw a line edge-to-edge. Then mark for drilling 1-5/8" from one side of that line. Drill through.
3. Turn 4x4 over so that you can mark and drill another hole 1-5/8" on the other side of that line, but on the adjacent side. You will now have two drilled through holes that are 3-1/2" apart, each 1-5/8" from the center of the board and perpendicular to each other.
4. Pre-drill all three 4x4s that way. I then used 8" long hex head bolts, two washers each and a nylock nut to assemble them together. I did tighten them up quite a bit, since mine was assembled at our club and gets quite a bit of use.
5. We drilled another hole lower on one leg to insert a bolt for a "lock". This allows you to loosen the two main bolts and fold all legs together for transport.









Credits: "Lash" (Snipers Hide)

Steve Lowe, Match Director YMM

Mike Robinson, Assistant Match Director YMM

