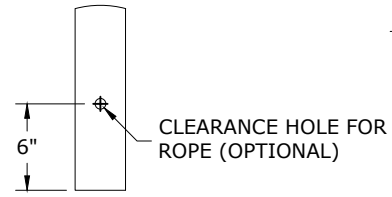
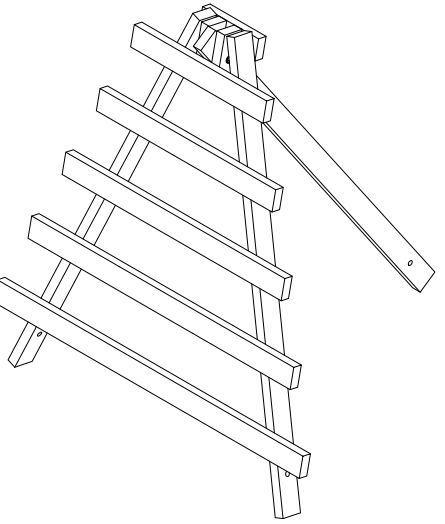
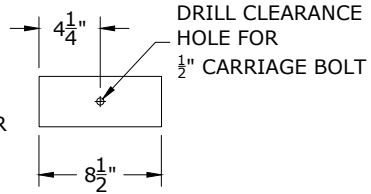


ALL LEGS BOTTOM



PIVOT SUPPORTS



2X4 CUT LIST

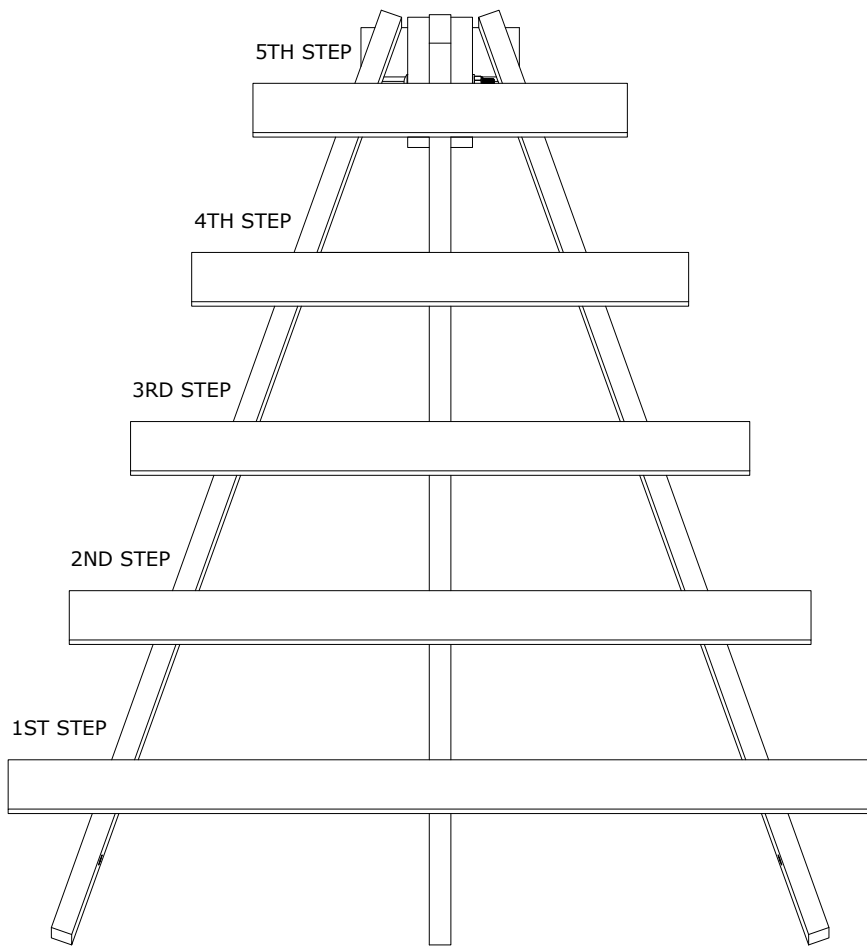
QTY	LENGTH	NOTES
1	78"	CENTER LEG
2	69"	ANGLE LEGS
1	60"	BOTTOM STEP
1	51-1/2"	2ND STEP
1	43"	3RD STEP
1	34-1/2"	4TH STEP
1	26"	TOP STEP
1	11"	REAR STOP
2	8.5"	PIVOT SUPPORTS



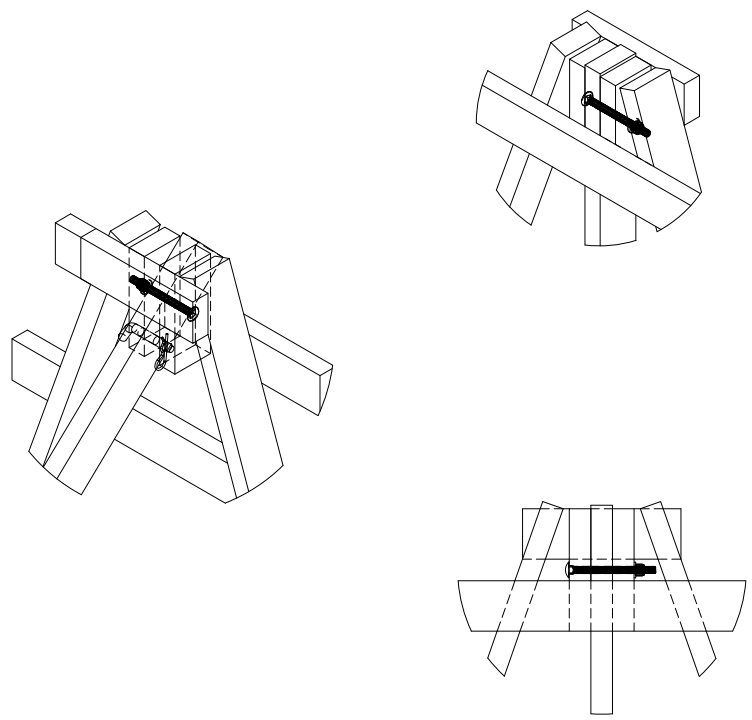
We would like to thank Jack Lanhart from Gopher Rifle & Revolver Club for the design concept, and Patrick Middleton from West Tennessee Rimfire for the cut sheet and build instructions.

NRL22 PYRAMID

PARTS LIST	
QTY	DESCRIPTION
1	$\frac{1}{2}$ " X 6" CARRIAGE BOLT
1	$\frac{1}{2}$ " FLAT WASHER
1	$\frac{1}{2}$ " LOCK-NUT OR (2) JAMB NUTS
1	$\frac{5}{8}$ " X 3" HITCH PIN
4	2" X 4" X 10' LUMBER
1b	2-1/2" DECK SCREWS

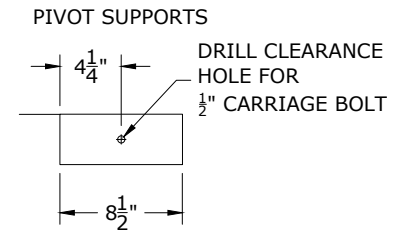
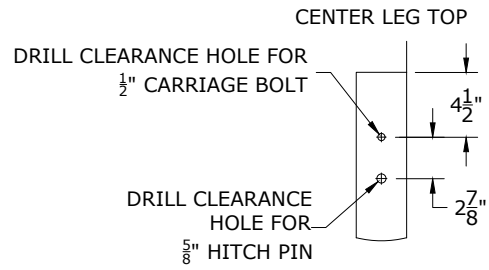


POSITION LOCATIONS



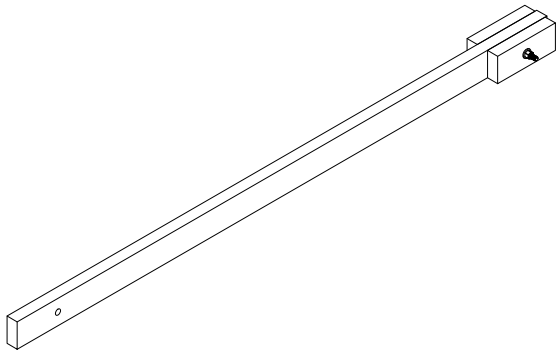
NRL22 PYRAMID

1



Prepare center leg and pivot supports for clearance holes

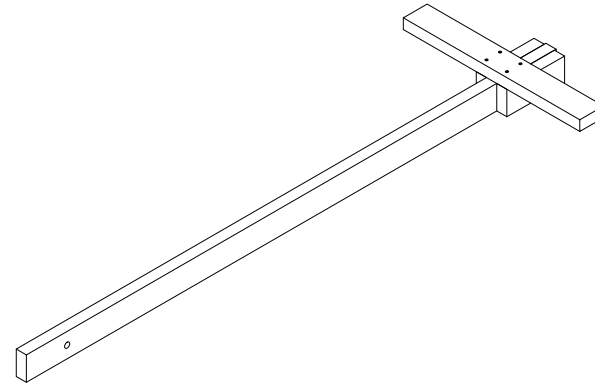
2



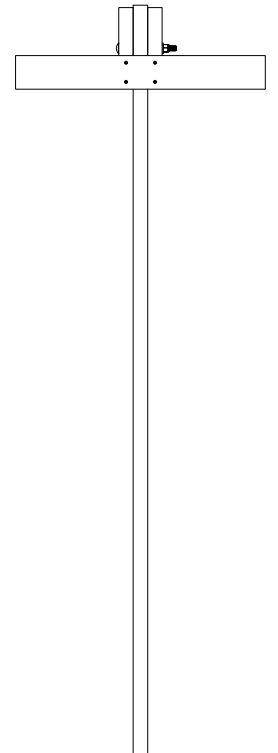
Assemble pivot supports (8.5") to center leg (78") with carriage bolt/flat washer/lock nut.

Nut should be tight enough to allow center leg movement with some resistance.

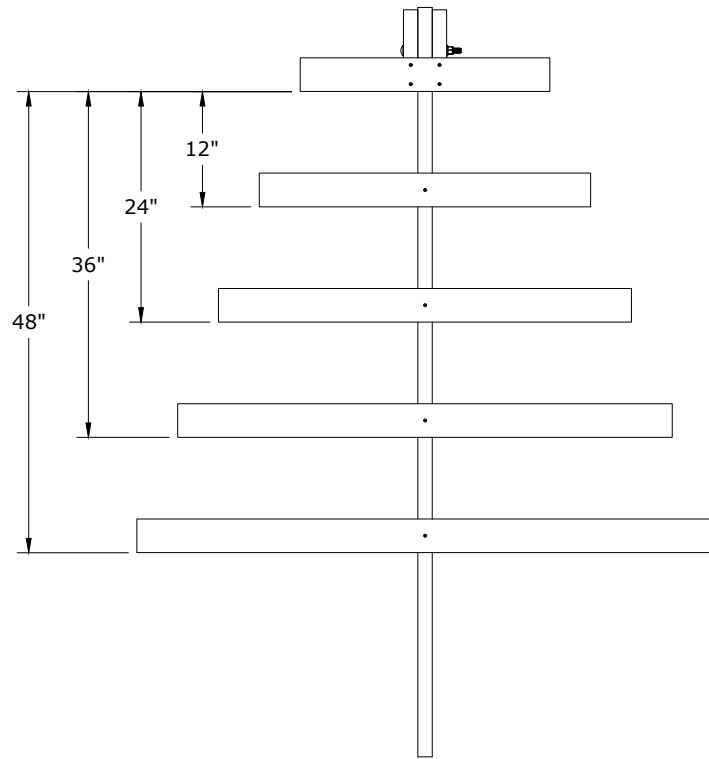
3



Align top step (26") with bottom of pivot supports centered on center leg. Secure to each pivot support with 2 screws



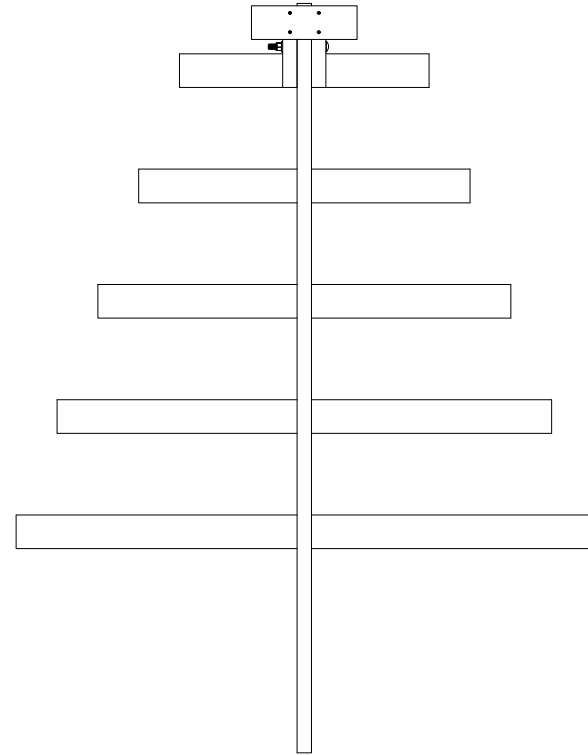
4



Mark center leg with dimensions shown and center of each step (34-1/2", 43", 51-1/2", & 60") - Each step should measure 12" from the top of one step to the top of the next step (~8-1/2" space between steps)

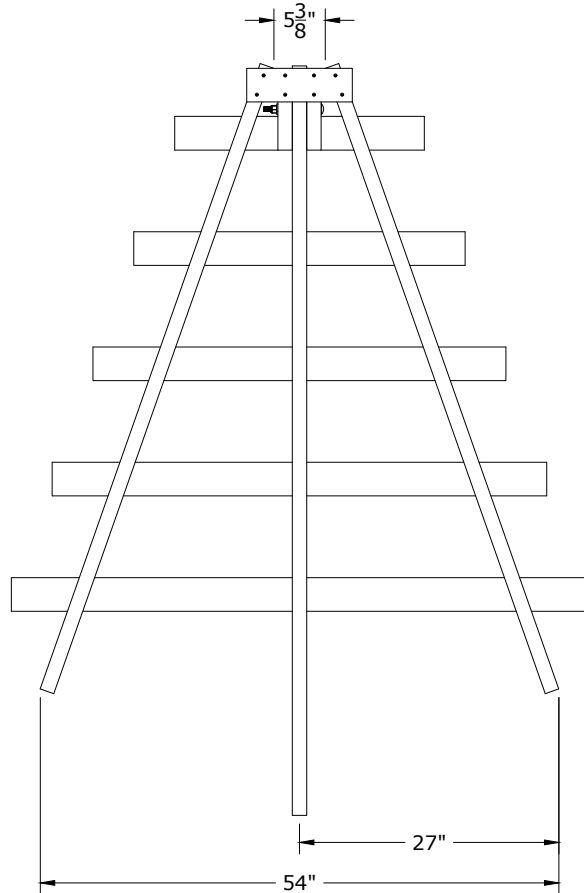
Attach each step to center leg with one screw per step.

5



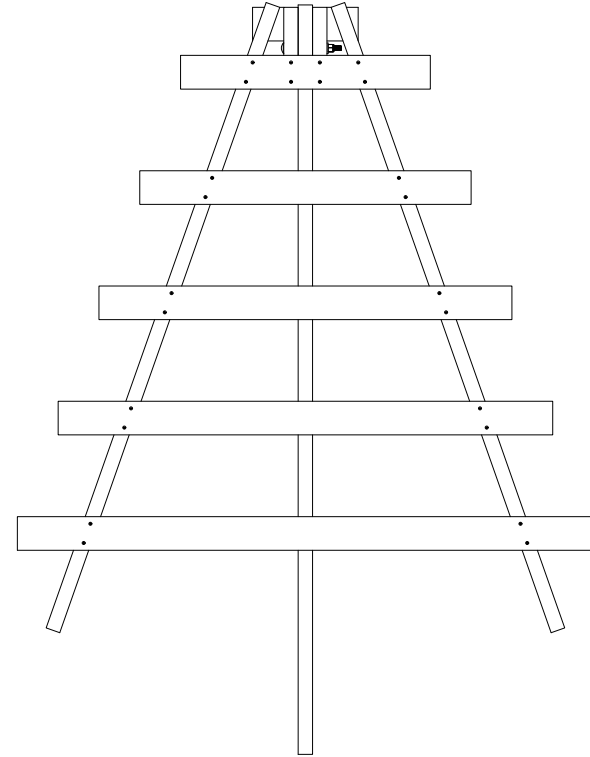
Flip over and align rear stop (11") with top of pivot supports centered on center leg. Secure to each pivot support with 2 screws

6



Top of angled legs (69") should be even with top of rear stop and 5-3/8" apart. Bottom of angled legs should be 54" apart and centered to the center leg. Secure angled legs to rear stop with 2 screws per leg.

7



Flip over and secure each step to angled legs with 2 screws per leg ensuring each step is parallel and bottom of legs remain 54" apart.

After all legs are secured remove screws between steps and center leg.

Adjust carriage bolt tightness for center leg tension.

Hitch pin when installed will keep pyramid from collapsing back on itself if hung on movement.

A rope tied to the bottom of the legs may be used to stabilize the pyramid if necessary.